



What kind of Holiday Family are you ?

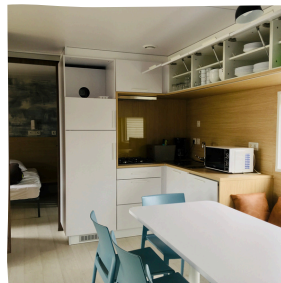
Different types of rental accommodation to choose from:

Nature Family



Pitches with electrical hookup for tents, caravans and motor-homes

Comfort Plus Family



A modern mobile-home with covered veranda
2 shower rooms
Heating in the bedrooms
Air conditioning
TV & Wi-Fi
Bed linen provided


Adventure Family



Chalet
TV & Wi-Fi

Comfort Family



Modern mobile-home with covered veranda
A wheelchair-friendly  version available
TV & Wi-Fi

Our best offers

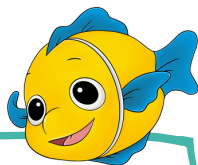
Find out more on our website:

- Chadotel Members card: 25€ (only to be paid for the first year)
- The Chadotel Unbeatable Offer
- Loyalty points



Activities

During the day from April*
Evening entertainment in July/August
*programming according to attendance



ChadöKids

Kids club for 4 to 12 year olds
During the french school holidays

What to do ?

Young and old alike can enjoy the nautical playground that the Vendée coastline has to offer with surfing, sailing, fishing and much more. The less-adventurous can relax on the sunny beaches of the coast and escape to the island of Ile d'Yeu for a truly rejuvenating day-trip.



Reservations

BY INTERNET



www.chadotel.com

Secure credit card payments

BY TELEPHONE



+33(0)251330505*
+33(0)251546916

*Monday to Friday from 9am-6pm
(reservations with payment by credit card)





BY POST



By returning the contract with payment to our reservations office
CHADOTEL
54 Rue Georges Clemenceau
BP 12
85520 JARD SUR MER
FRANCE

For information or advice ???

Email us : info@chadotel.com or call

PITCHES	Duration	No. pers.	05.04 / 08.05	08.05 / 12.05	12.05 / 17.05	17.05 / 20.05	20.05 / 22.06	22.06 / 29.06	29.06 / 06.07	06.07 / 13.07	13.07 / 03.08	03.08 / 13.08	13.08 / 20.08	20.08 / 25.08	25.08 / 01.09	01.09 / 22.09
Rates with electricity 	1 night	1 or 2	20	24	20	24	20	23	29	36	42	43	46	42	23	20
Rate with electricity and private sanitary  	1 night	1 or 2	35	48	35	48	35	48	54	64	68	70	73	68	48	35
Cyclists' ratse 	1 night	1	7	10	7	10	7	10	15	24	29	29	29	24	10	7
2		10	14	10	14	10	14	21	30	35	35	35	30	14	10	

Our prices include:

Access during opening hours to the pool complex: indoor heated pool, outdoor pool heated from May, water-slide, paddling pool, the children's play area, sports area, pétanque court, the Kids' Club during the school holidays and evening entertainment from July/August, as well as the bar/restaurant and take-away.



OPTIONAL EQUIPMENT AND SERVICES RATES

Additional person (over 13 years old)	6.40 €/ day	Washing Machine token	6€ / token + detergent
Child aged from 2 to 12	4.20 € / day	Dryer token	4.50€ / token
Children under 2 years	free	Travel cot	3€ / day
Additional vehicle	3.20 € / day	High chair	2€ / day
Fridge hire	6 € / day	Baby bathtub	2€ / day
Pet	4 € / per day/ pitch 6.50€ / per day/ rental unit	Baby pack (cot + high chair + bathtub)	5€ / day
Cancellation insurance	3% of full amount	Electric barbeque	5€ / day 22€ / week
		Bed sheets - double	14€ / stay
		Bed sheets - single	12€ / stay
		Towel kit (1 large + 1 small)	5€ / kit
		Bike hire	Reservations on-site
		Tennis	Free

Remember to reserve any extras in advance



Additional Fees	
Booking fee	25€ (15€ online)
Tourist tax	0.60€ / night / person + 18 years

Good to know

- The pool complex is reserved for our campsite clients only
- The **electric barrier gate** uses an automatic number plate recognition system (open from 6am to 11:30pm).
- **Gas and charcoal barbecues are permitted.** Electric grills/barbecues are not allowed.
- **Minors** unaccompanied by their parents or legal guardians **will not be allowed in the campsite.**
- **1 pet animal only** (tattooed/chipped and vaccinated) per pitch. Category 1 & 2 dogs are not permitted.
- Tents are not allowed on the mobile-home pitches.

For the rental accommodation : (ALL non smoking)

- Arrivals from 4pm, departures before 10am
Remember to reserve the departure inventory
- *Low season :*
 - Minimum stay 2 nights (3 nights the Ascension weekend)
 - Check in/check out everyday
- *High season*
 - Minimum stay 7 nights
 - Arrival/departure days : Saturdays, Sundays and Wednesdays (depending on accommodation)
- Security deposit : 250€.

For the campsite pitches :

- Anyday arrival, no minimum stay.
- Arrivals/departures at 12am (depending on Reception opening hours during the low season)

