



What kind of Holiday Family are you ?

Different types of rental accommodation to choose from:

Nature Family



Pitches with electrical hookup for tents, caravans and motor-homes

Pitches with private sanitary facilities

Comfort Plus Family



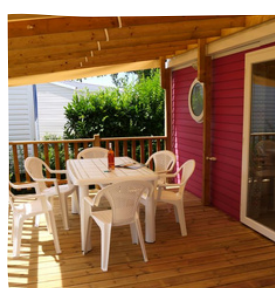
A modern mobile-home with covered deck
2 shower rooms
Heating in the bedrooms
TV & Wi-Fi
Bed linen provided


Adventure Family



Coco Lodge
Wi-Fi

Comfort Family



Modern mobile-home with covered veranda
A wheelchair-friendly version available 
TV & Wi-Fi

Our best offers

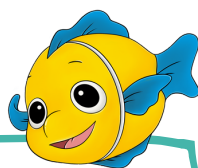
Find out more on our website:

- Chadotel Members card: 25€ (only to be paid for the first year)
- The Chadotel Unbeatable Offer
- Loyalty points

Activities

During the day from April*
Evening entertainment in July/August

*programming according to attendance



Chadokids

Kids club for 4 to 12 year olds
During the french school holidays



What to do?

The South Vendée offers landscapes rich in flora and fauna that never ceases to amaze. Loaded with history, the region has a cultural heritage with its abbeys, mills and castles. Do not miss a visit to Georges Clémenceaus property in in Saint-Vincent-sur-Jard.



The jetty at la maisons du marais

Reservations

BY INTERNET 

www.chadotel.com
Secure credit card payments

BY TELEPHONE 

+33(0)251330505*
+33(0)251903605

*Monday to Friday from 9am-6pm
(reservations with payment by credit card)

BY POST 

By returning the contract with payment to our reservations office
CHADOTEL
54 Rue Georges Clémenceau
BP 12
85520 JARD SUR MER
FRANCE

For information or advice ???

Email us : info@chadotel.com or call



| PITCHES | Duration | No. pers. | 05.04 / 08.05 | 08.05 / 12.05 | 12.05 / 17.05 | 17.05 / 20.05 | 20.05 / 22.06 | 22.06 / 29.06 | 29.06 / 06.07 | 06.07 / 13.07 | 13.07 / 03.08 | 03.08 / 13.08 | 13.08 / 20.08 | 20.08 / 25.08 | 25.08 / 01.09 | 01.09 / 22.09 |
|---|----------|-----------|---------------|---------------|---------------|---------------|---------------|---------------|---------------|---------------|---------------|---------------|---------------|---------------|---------------|---------------|
| Rates with electricity | 1 night | 1 or 2 | 17 | 22 | 17 | 22 | 17 | 17 | 19 | 26 | 37 | 39 | 42 | 37 | 19 | 17 |
| Rates with electricity + private sanitary facilities | 1 night | 1 or 2 | 35 | 48 | 35 | 48 | 35 | 48 | 50 | 54 | 60 | 66 | 69 | 60 | 50 | 35 |
| Cyclists' rates | 1 night | 1 | 7 | 9 | 7 | 9 | 7 | 9 | 9 | 13 | 23 | 23 | 23 | 15 | 9 | 7 |
| 2 | | 9 | 13 | 9 | 13 | 9 | 13 | 13 | 13 | 19 | 29 | 29 | 29 | 22 | 13 | 9 |

Our prices include:

Access during opening hours to the pool complex: indoor heated pool, outside pool heated from May, water-slide, paddling pool, the children's play area, sports area, crazy-golf, tennis and volleyball courts, pétanque court, the Kids' Club during the school holidays and the evening entertainment in July/August, the bar and games room, as well as the take-away.



OPTIONAL EQUIPMENT AND SERVICES RATES

| | | | |
|---------------------------------------|--|--|---------------------------|
| Additional person (over 13 years old) | 6.40 € / day | Washing Machine token | 6€ / token + detergent |
| Child aged from 2 to 12 | 4.20 € / day | Dryer token | 4.50€ / token |
| Children under 2 years | free | Travel cot | 3€ / day |
| Additional vehicle | 3.20 € / day | High chair | 2€ / day |
| Fridge hire | 6 € / day | Baby bathtub | 2€ / day |
| Pet | 4 € / per day/ pitch 6.50€ / per day/ rental unit | Baby pack (cot + high chair + bathtub) | 5€ / day |
| Cancellation insurance | 3% of full amount | Electric barbecue | 5€ / day 22€ / semaine |
| | | Bed sheets - double | 14€ / stay |
| | | Bed sheets - single | 12€ / stay |
| | | Towel kit (1 large + 1 small) | 5€ / kit |
| | | Bike hire | Reservation on-site |
| | | Tennis | Free |

Remember to reserve any extras in advance



Additional Fees

| | |
|-------------|-----------------------------------|
| Booking fee | 25€ (15€ online) |
| Tourist tax | 0.66€ / night / person + 18 years |

Good to know

- The pool complex is reserved for our campsite clients only
- The **electric barrier gate** uses a badge system (open from 6am to 11:30 pm).
- Gas and charcoal barbecues are permitted.** Electric grills/barbecues are not allowed.
- Minors** unaccompanied by their parents or legal guardians **will not be allowed in the campsite.**
- 1 pet animal only** (tattooed/chipped and vaccinated) per pitch. Category 1 & 2 dogs are not permitted.
- Tents are not allowed on the mobile-home pitches.

For the rental accommodation : (ALL non smoking)

- Arrivals from 4pm, departures before 10am
Remember to reserve the departure inventory
- Low season :**
 - Minimum stay 2 nights (3 nights the May long weekend)
 - Check in/check out everyday
- High season**
 - Minimum stay 7 nights
 - Arrival/departure days : Saturdays, Sundays and Wednesdays (depending on accommodation)
- Security deposit : 250€.

For the campsite pitches :

- Anyday arrival, no minimum stay.
- Arrivals/departures at 12am (depending on Reception opening hours during the low season)

