

Open from 4th April to 28th September 2025

## WHAT KIND OF HOLIDAY FAMILY ARE YOU ?

Discover our range of mobile homes according to your preferences.

### NATURE




Pitches with electrical hookup for tents, caravans and motor-homes

Pitches with individual sanitary facilities

### COMFORT

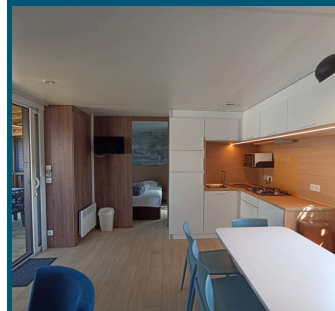


Modern mobile-home with covered veranda

A wheelchair-friendly  version

TV & Wi-Fi

### COMFORT +



A modern mobile-home with covered veranda

2 shower rooms

Heating in the bedrooms

Air conditioning

TV & Wi-Fi

Bed linen provided

## ACTIVITIES FOR EVERYONE!

### ACTIVITIES

During the day from April\*  
Evening entertainment in July/August

*\*programming according to attendance*



### KIDS CLUB

For 4 to 12 year olds

*\*During the french school holidays*

### TO VISIT

Young and old alike can enjoy the nautical playground that the Vendée coastline has to offer with surfing, sailing, fishing and much more. The less-adventurous can relax on the sunny beaches of the coast and escape to the island of Ile d'Yeu for a truly rejuvenating day-trip.

## BEST OFFERS

### FIND MORE ON OUR WEBSITE:

- Chadotep Members card (25€ valid for life)
- The Chadotep Unbeatable Offer
- Loyalty points

## HOW TO RESERVE ?



**chadotep.com**  
Secure credit card payments



**+33(0)2 51 33 05 05 \***  
**+33(0)2 51 54 69 16**  
\* Monday to Friday from 9am-6pm  
(reservations with payment by credit card)



**CHADOTEP**  
**54 Rue Georges Clemenceau**  
**85520 JARD SUR MER**

By returning the contract with payment to our reservations office

PITCHES	Duration	No pers.	04.04 / 18.04	18.04 / 21.04	21.04 / 01.05	01.05 / 11.05	11.05 / 28.05	28.05 / 01.06	01.06 / 06.06	06.06 / 09.06	09.06 / 21.06	21.06 / 04.07	04.07 / 11.07	11.07 / 26.07	26.07 / 13.08	13.08 / 20.08	20.08 / 24.08	24.08 / 01.09	01.09 / 28.09
			<b>Rate with electricity</b> 	1 night	1 ou 2	20	24	20	24	20	26	20	26	20	29	36	42	45	48
<b>Rate with electricity and private sanitary</b> 	1 night	1 ou 2	35	40	35	40	35	48	35	48	35	54	64	68	71	74	68	54	35
<b>Cyclists' rates</b> 	1 night	1	7	8	7	8	7	10	7	10	7	14	20	25	25	25	20	10	7
		2	10	12	10	12	10	14	10	14	10	20	26	31	31	31	26	14	10

### Our prices include :

Access during opening hours to the pool complex: indoor heated pool, outdoor pool heated from May, water-slide, paddling pool, the children's play area, sports area, pétanque court, the Kids' Club during the school holidays and evening entertainment from July/August, as well as the bar/restaurant and take-away.

## OPTIONAL EQUIPMENT AND SERVICES RATES

Additional person (over 13 years old)	6.40 € / day	Washing Machine token	6€	CB
Child aged from 2 to 12	4.20 € / day	Dry token	4.50€	
Children under 2 years	free	Travel cot	3€ / day	
Additional vehicle	3.20 € / day	High chair	2€ / day	
Fridge hire	6 € / day	Baby bathtub	2€ / day	
Pet	4 € / per day/ pitch 6.50€ / per day/ rental unit (Not authorised in Méditerranée mh)	Baby pack (cot + high chair + bathtub)	5€ / day	
		Electric barbecue	5€ / day	22€ / week
Cancellation insurance	3% of full amount	Bed sheets - double	14€ / stay	
		Bed sheets - single	12€ / stay	
		Towel kit (1 large + 1 small)	5€ / kit	
		Bike hire	Reservation on-site	
		Table-tennis	free	

Remember to reserve any extras in advance

### MUST-HAVE OFFERS\*

21 = 14 (7 nights offered)

14 = 10 (4 nights offered)

in low season

\*Conditions Chadotel web-site

### ADDITIONAL FEES

Booking fee	25€ (15€ online)
Tourist tax (2024 pricing)	0.61€ / night / person + 18 years

## Good to know

- The pool complex is reserved for our campsite clients only
- The **electric barrier gate** uses an automatic number plate recognition system (open from 7am to 11 pm).
- Use of charcoal barbecues is forbidden, **only electric and gas barbecues are permitted.**
- Minors unaccompanied by their parents or legal guardians **will not be allowed in the campsite.**
- 1 pet animal only** (tattooed/chipped and vaccinated) per pitch. Category 1 & 2 dogs are not permitted.
- Tents are not allowed on the mobile-home pitches.

### For the rental accommodation : (ALL non smoking)

- Arrivals from 4pm, departures before 10am
- Low season :
  - Minimum stay 2 nights (3 or 4 nights on public holiday WE)
  - Check in/check out everyday
- High season
  - Minimum stay 7 nights
  - Arrival/departure days : Saturdays, Sundays and Wednesdays (depending on accommodation)
- Security deposit : 250€.

### For the campsite pitches :

- Anyday arrival, no minimum stay.
- Arrivals/departures at 12am (depending on Reception opening hours during the low season)
- Deposit 100€ pitches with private sanitary facilities (arrivals from 3pm)

